

SUMMER Abroad

UNIVERSITY OF JYVÄSKYLÄ

Summer School in Human Sciences

FINLAND

with



LOCATION

The university is located in the small but modern Finnish Lake District, where available activities include water sports and skiing. Finland is also well known for its natural beauty and high standard of living.

PROGRAM DETAILS

Established as a teacher training college in the 1860s, the University is top-ranked and characterized by a high level of technological sophistication, active international cooperation, and teaching. The summer program comprises 14 interdisciplinary courses for advanced undergraduate or graduate students. Free-time activities include Finnish movie night, sauna evening, sight-seeing tour, cooking course, canoeing trip, and a trip to a national park.

COURSES AND CREDITS

Students are welcome to take the full summer program (one course per week) or parts of it. Each course comprises 24 contact hours and is worth 2 – 4 ECTS (usually 1 – 2 US credits).

Psychology

Working Models in Domestic Violence Counseling
Dialogical and Narrative Practices in Consultation, Counseling, and Therapy

Business, Economics, and Leadership

Corporate Approaches to Sustainable Consumption
Current Issues in Leadership
Social Networks and Interpersonal Relations in a Multicultural World
Creating and Leading Communities of Learners

Art and Cultural Studies/Digital Culture

Introduction to Arabic and Islamic Art and Culture
Finnish Language and Culture
Eye-Tracking Techniques for Cognitive and Usability Testing
Information Design
Science and Religion: Philosophical and Historical Perspectives

Health, Social, and Sport Sciences

Health Behavior Among School-Aged Children
Introduction to Development Studies
Organization and Role of Sport in the EU



HOUSING AND MEALS

Students are housed in the Kortepohja Student Village, about 1.5 miles from the university, in furnished bedrooms with a shared kitchenette and bathroom. They receive a scholarship of EUR 340 for meals.

DATES

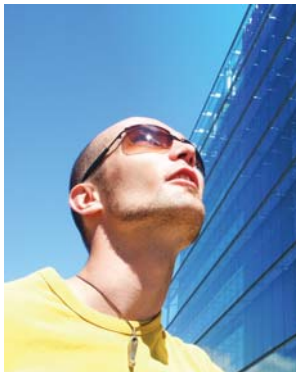
May 17 – June 11, 2010

ISEP-EXCHANGE COST

Program fee is based on tuition, housing, and meals at home institution. Plus a \$355 non-refundable application fee.

DEADLINE TO APPLY

April 1, 2010



The Experience of a Lifetime

www.isep.org/summer